



The Natura 2000 Biogeographical Process

EMBRACING ESTUARIES

Management of Natura 2000 Sites in Estuaries and Sea Ports

Hamburg, 15 – 16 September 2016

François Kremer, European Commission, Nature Unit



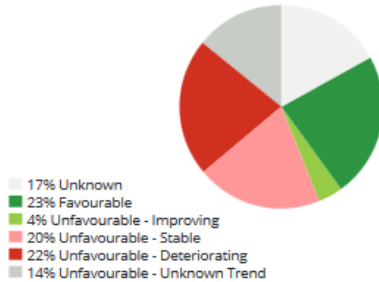
Natura 2000 Biogeographical Process

Poor conservation status

Species

Overall, 23% of the EU-level species assessments are favourable and 4% are unfavourable but improving; 20% are stable, 22% are deteriorating and 17% are unknown.

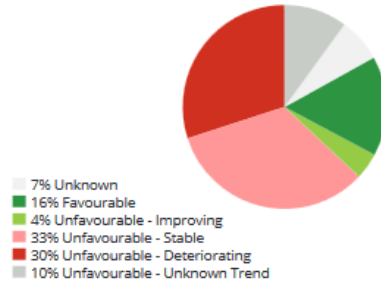
Conservation status and trends of species



Habitats

Overall, 16% of the EU-level habitat assessments are favourable and 4% are improving; 33% are unfavourable but stable. A further 30% are still deteriorating, which is a serious cause for concern. Only 7% of the assessments are unknown.

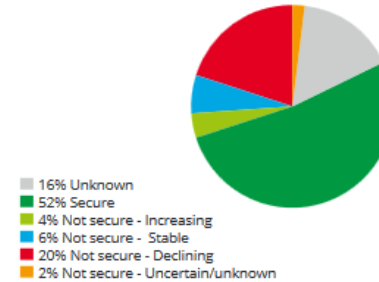
Conservation status and trends of habitats



EU bird population status and trends

Over half (52%) of the bird species assessments have a secure population status. Short-term trends indicate that some 4% of all bird species are non-secure but increasing, and 6% are stable, even if a further 20% are declining.

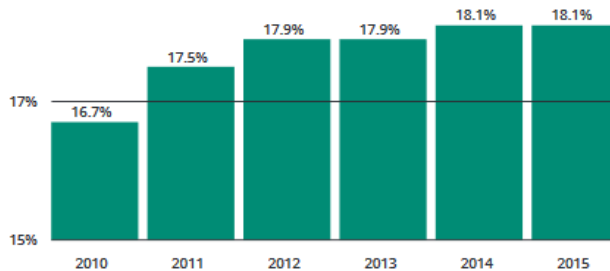
Birds' population status and short-term population trends



Natura 2000 network extended

Since 2010, the network of Natura 2000 sites has progressed and is largely completed for terrestrial and inland water habitats covering about 18% of the land surface. The coverage of the marine network has increased to more than 300.000 km² in 2014.

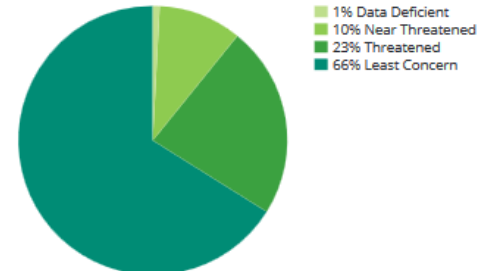
Share of EU land area covered by Natura 2000 sites.



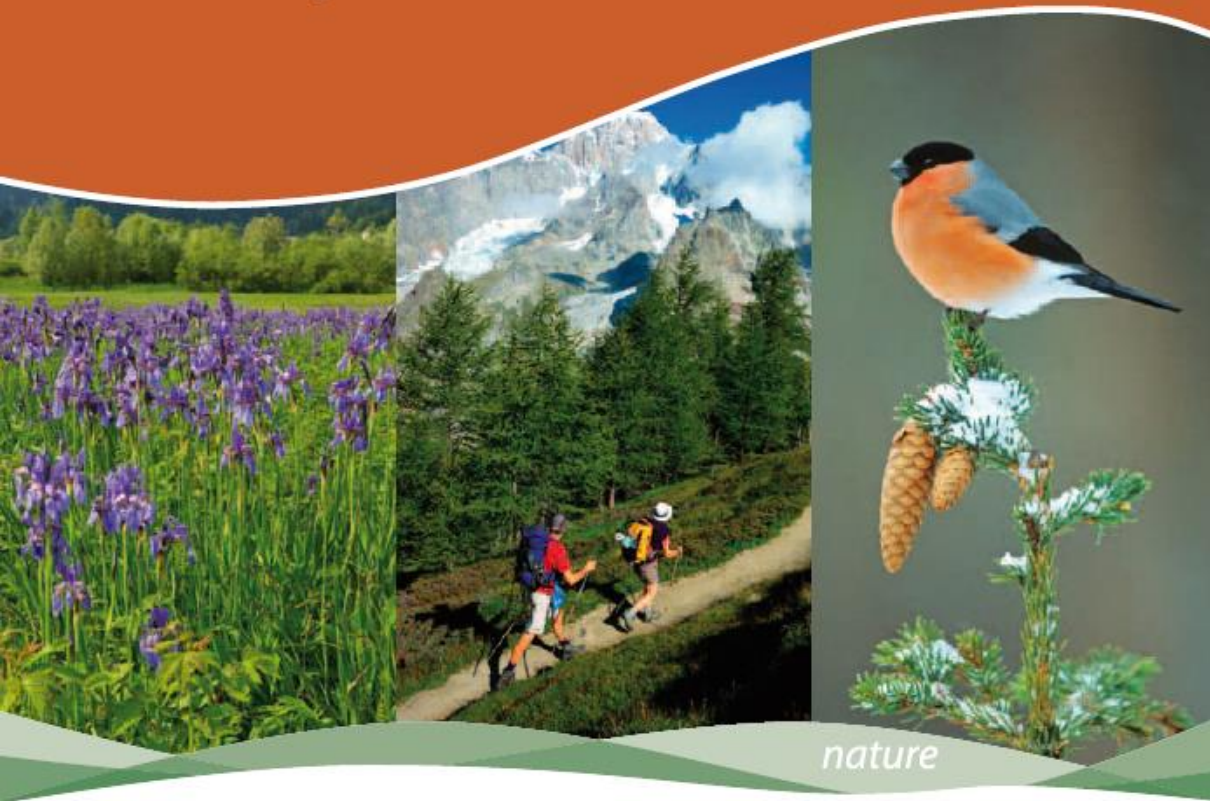
Many species threatened with extinction

Overall, at least 23% species are threatened in EU. Freshwater species - mollusc (55%) and freshwater fish (43%) - are the groups with the highest proportion of threatened species, together with marine mammals (43%), followed by amphibians (22%), reptiles (21%) and birds (18%).

Species facing the risk of extinction which have had a complete assessment at EU level between 2007 and 2015.



The EU Biodiversity Strategy for 2020



nature



Protect species and habitats - Target 1

By 2020, the assessments of species and habitats protected by EU nature law show better conservation or a secure status for 100 % more habitats and 50 % more species.

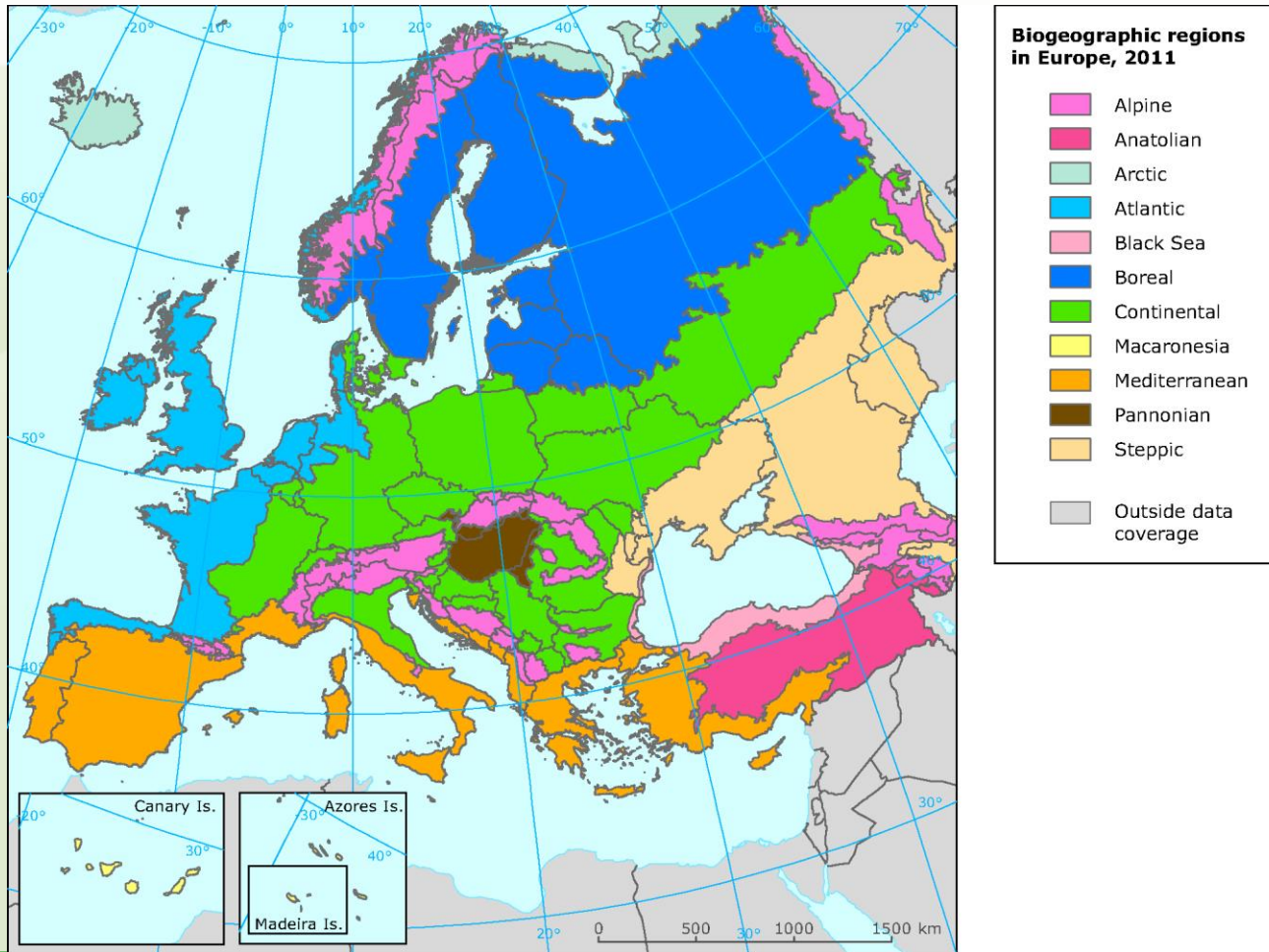
Maintain and restore ecosystems – Target 2

By 2020, ecosystems and their services are maintained and enhanced by including green infrastructure in spatial planning and restoring at least 15 % of degraded ecosystems.



Natura 2000 Biogeographical Process

The biogeographical regions



Conservation status - Habitat: 1130 Estuaries

Report under the Article 17 of the Habitats Directive - Period 2007-2012

Overall conclusion is "unfavorable- bad" in all regions except for the Black Sea.

Atlantic region: The habitat seems to be in worst conditions in the north of the Atlantic region. Here both of the parameters “structures and functions” and “future prospects” are considered bad.

Baltic Sea: The situation also bad with inadequate future prospects. Here estuaries are also assessed as critically endangered in HELCOMs “Red List of Baltic Sea underwater biotopes”.

Mediterranean region: Structures and functions are unknown but future prospects are considered bad.

Black Sea: the overall conclusion is favorable. The Danube delta is a relatively well preserved delta and also an UNESCO world heritage site.



Conservation status - Habitat: 1130 Estuaries

Report under the Article 17 of the Habitats Directive - Period 2007-2012

Region	Conservation status (CS) of parameters				Current CS	Trend in CS	% in region	Previous CS	Reason for change
	Range	Area	Structure & Functions	Future prospects					
MATL	U1	XX	U2	U2	U2	-	59	U2	
MBAL	FV	FV	U2	U1	U2	=	29	U2	
MBLS	FV	FV	U1	U1	U1	=	2	XX	Not genuine
MMED	U1	XX	XX	U2	U2	x	11	XX	Not genuine



Natura 2000 Biogeographical Process

Ten most frequently reported 'highly important' pressures

Code	Activity	Frequency
H01	Pollution to surface waters	23
J02	Changes in water bodies conditions	23
D03	Shipping lanes and ports	13
E01	Urbanisation and human habitation	8
F02	Fishing and harvesting aquatic resources	8
A02	Modification of cultivation practices	3
A08	Fertilisation in agriculture	3
C01	Mining and quarrying	3
E03	Discharges (household/industrial)	3
E06	Other urban/industrial developments	3

Ten most frequently reported 'highly important' threats

Code	Activity	Frequency
J02	Changes in water bodies conditions	27
H01	Pollution to surface waters	21
D03	Shipping lanes and ports	12
E01	Urbanisation and human habitation	6
F02	Fishing and harvesting aquatic resources	6
M01	Abiotic changes (climate change)	6
A08	Fertilisation in agriculture	3
C01	Mining and quarrying	3
E03	Discharges (household/industrial)	3
E06	Other urban/industrial developments	3



Ten most frequently reported 'highly important' conservation measures

Code	Measure	Frequency
6.1	Establish protected areas/sites	17
4.1	Restoring/improving water quality	13
4.2	Restoring/improving the hydrological regime	13
4.4	Restoring coastal areas	8
4.0	Other wetland-related measures	6
5.0	Other marine-related measures	6
6.3	Legal protection of habitats and species	6
9.2	Regulating/Managing exploitation of natural resources on sea	6
7.3	Regulation/ Management of fishery in marine and brackish systems	4
8.3	Managing marine traffic	4

This information is derived from the Member State national reports submitted to the European Commission under Article 17 of the Habitats Directive in 2013 and covering the period 2007-2012. More detailed information, including the MS reports, is available at:

<http://bd.eionet.europa.eu/article17/reports2012/habitat/summary/?group=Coastal+habitats&period=3&subject=1130>



The Natura 2000 Biogeographical Process in a nutshell

- **WHY?** Support of Targets 1 & 2 of the Biodiversity Strategy
- **WHEN?** Launched in 2011
- **WHERE?** EU, at Biogeographical level
- **WHO?** All Natura 2000 stakeholders
- **WHAT?** Networking, information exchange and cooperation
- **HOW?** Natura 2000 Seminars, Expert meetings & Workshops, cross-border projects, ...

Knowledge building about practical Natura 2000 management issues

Natura 2000 Communication Platform:



Natura 2000 Biogeographical Process

http://ec.europa.eu/environment/nature/natura2000/platform/documents/atl-workshop-report-final-08102012_en.pdf



Natura 2000 Seminars

Atlantic Region

Atlantic Seminar
3-5 December 2012, Bergen, The Netherlands

Atlantic Natura 2000
Seminar Report
(Final Draft)



Natura 2000 Biogeographical Process

2012 Atlantic Natura 2000 Seminar - main issues for consideration:

- natural dynamics
- large scale loss of habitats
- connectivity
- sediment management
- invasive alien species
- climate change
- communication



...and some identified issues for cooperation

- Promoting an integrated approach for estuaries management in Natura 2000 and in developing plans and projects, including a workshop on integrated management planning in estuaries,
- the identification of demonstration projects and best practices,
- the establishment of cross-border cooperation processes,
- The integration of socio-economic aspects,
- the establishment of monitoring mechanisms



The Natura 2000 Communication Platform

http://ec.europa.eu/environment/nature/natura2000/platform/index_en.htm

Legal notice | Cookies | Contact | Search | English (en)

European Commission

ENVIRONMENT

European Commission > Environment > Nature > Natura2000 > Platform

Home About us Policies Funding Legal compliance News & outreach

Home
Knowledge exchange
Knowledge Base
Events calendar
Forum
News
Contact & help desk

Natura 2000 Communication Platform

This communication platform supports Natura 2000 site managers, policymakers, civil society organizations and land managers in their efforts to achieve favourable conservation status of Europe's most precious habitats. It offers access to available management knowledge, relevant contacts, a forum for discussion, as well as relevant events, documents and news.

[Read more...](#)

Natura 2000 Biogeographical Process Newsletter

Issue 6 of the Natura 2000 Biogeographical Process Newsletter is online now!
View this latest edition (October 2015) [here](#).

The newsletter will be circulated bimonthly to provide you with an overview of progress within the Natura 2000 Biogeographical Process. It contains relevant Natura 2000 developments within each of the biogeographical regions, the latest news items, forthcoming networking events and links to other useful resources. Previous editions of the newsletter are available in the [newsletter section](#).

If you would like to receive the Natura 2000 Biogeographical Process Newsletter in your mailbox as soon as it comes out, [please subscribe here](#).

Latest news

[Natura 2000 Monitoring workshop was a success!](#)

[The 2016 edition of the Natura 2000 Award is open!](#)

[Natura 2000 Thematic Networking Event: "How can we make the Water Framework Directive and the Birds and Habitats Directives work together?"](#)

[Final report of the Continental Biogeographical Region Kick-off Seminar online](#)

[Natura 2000 Farming and Biodiversity Conference](#)

UPCOMING EVENTS

[Life to ad\(d\)mine - Final Seminar](#)

[Follow up event of the Natura 2000 seminar for the Pannonian, Black Sea and Steppic Regions](#)

[Europe's wood pastures: condemned to a slow death by the CAP?](#)

[See all...](#)

BIODIVERSITY INFORMATION SYSTEM FOR EUROPE

EIONET
European Topic Centre on Biological Diversity

NATURA 2000 AWARD

Home
Events calendar
News
Forum

Knowledge exchange
Library
Networking events

Knowledge Base
Expert directory
Organizations directory
Natura 2000 Funding Opportunities

Knowledge database
Links to member states
Contact & Helpdesk
F. A. Q.

Last update: 29/10/2015 23:00:48 | [Top](#)



Natura 2000 Biogeographical Process

Preparing for the next Natura 2000 Seminars

2nd Boreal Seminar, Vilnius, Lithuania, 5-7 October 2016

2nd Atlantic Seminar, Ennistymon, Ireland, 25-27 October 2016

Focus on achieving progress towards strategic priorities:

- Identify conservation priorities at the biogeographical level
- Identify strategic conservation objectives
- Propose concrete cooperation actions
- Discuss work on, e.g. biogeographical level favourable reference values (FRVs)
- Further develop and facilitate networking & knowledge building between all actors involved with the management of Natura 2000 as a coherent ecological network.



Natura 2000 Biogeographical Process

GUIDELINES

Implementing the Birds and Habitats Directives in estuaries and coastal zones with particular attention to port development and dredging

http://ec.europa.eu/environment/nature/natura2000/management/guidance_en.htm

The implementation of the Birds and Habitats Directives in estuaries and coastal zones

[bg](#) [es](#) [da](#) [de](#) [et](#) [el](#) [en](#) [fr](#) [it](#) [lv](#) [lt](#) [mt](#) [nl](#) [pl](#) [pt](#) [ro](#) [sl](#) [fi](#) [sv](#)
(390Kb)

Leaflet presenting the guide:

[es](#) [de](#) [en](#) [fr](#)

For the policy context, see the Commission Staff Working Document:

[Integrating biodiversity and nature into port development](#) (58Kb)

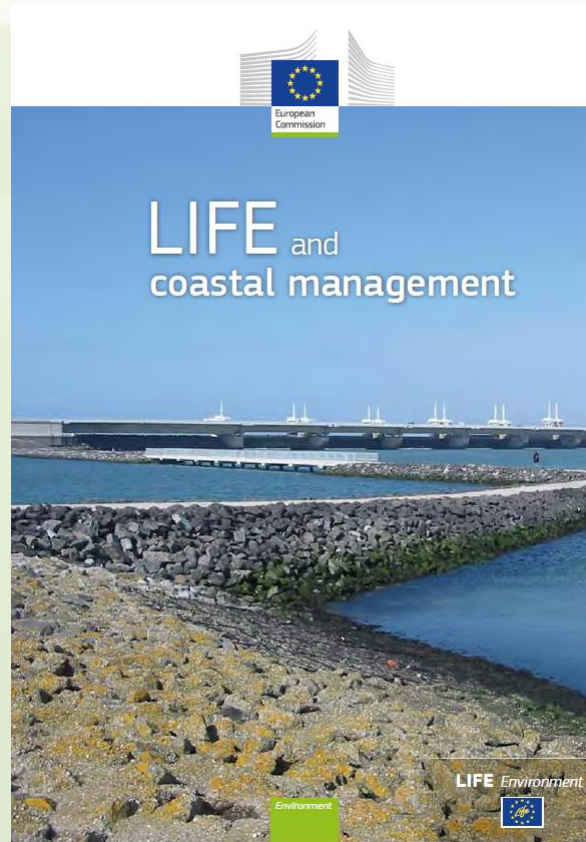


European Commission, January 2011



Natura 2000 Biogeographical Process

<http://ec.europa.eu/environment/life/publications/lifepublications/lifefocus/documents/coastal.pdf>



Natura 2000 Biogeographical Process



Thank for your attention

Natura2000Platform@ecnc.org

http://ec.europa.eu/environment/nature/natura2000/platform/index_en.htm