

An aerial photograph of a coastal area. A large, elongated island with a sandy beach and green vegetation is the central focus. To the left, a long pier extends into the water. In the background, a lighthouse is visible on a small island. The water is a deep blue, and the sky is clear.

# Humber Management Scheme

**Tania Davey**

**Project Manager, Humber  
Nature Partnership  
[info@humbernature.co.uk](mailto:info@humbernature.co.uk)**

# Background



- Humber Estuary: SPA, SAC, Ramsar
- Humber has one of the biggest port complexes in the UK and industry includes chemical, gas and oil and energy production
- HMS launched in 2005 & partnership and management plan for Humber European Marine Site (EMS)
- 30 Relevant Authorities
- Community involvement via Humber Nature Forum
- Part of Humber Nature Partnership since 2013

# Overview

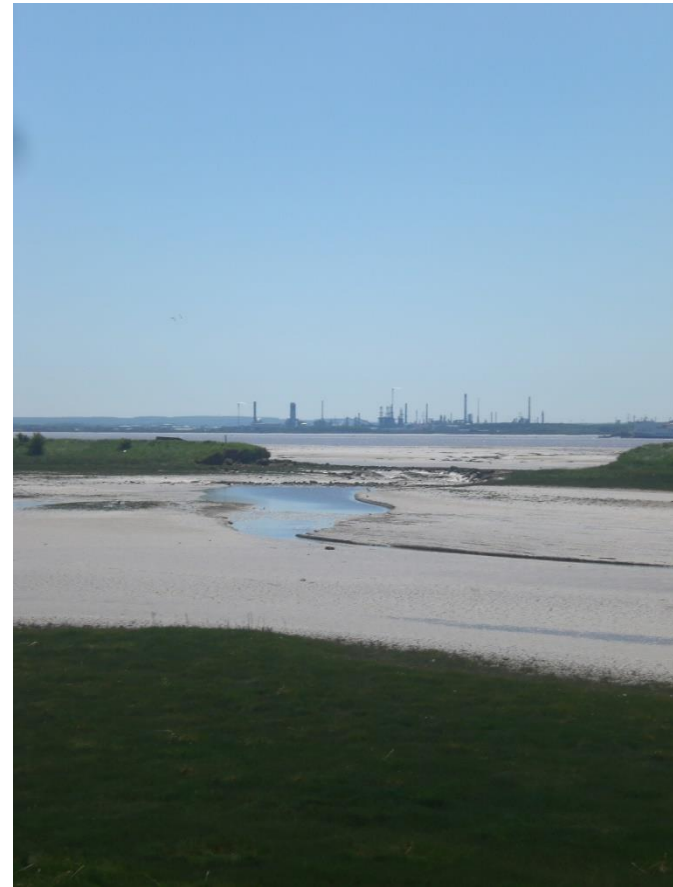


- How the Humber is managed
- Focus of the Humber Management Scheme
- Partnership working, strengths and challenges

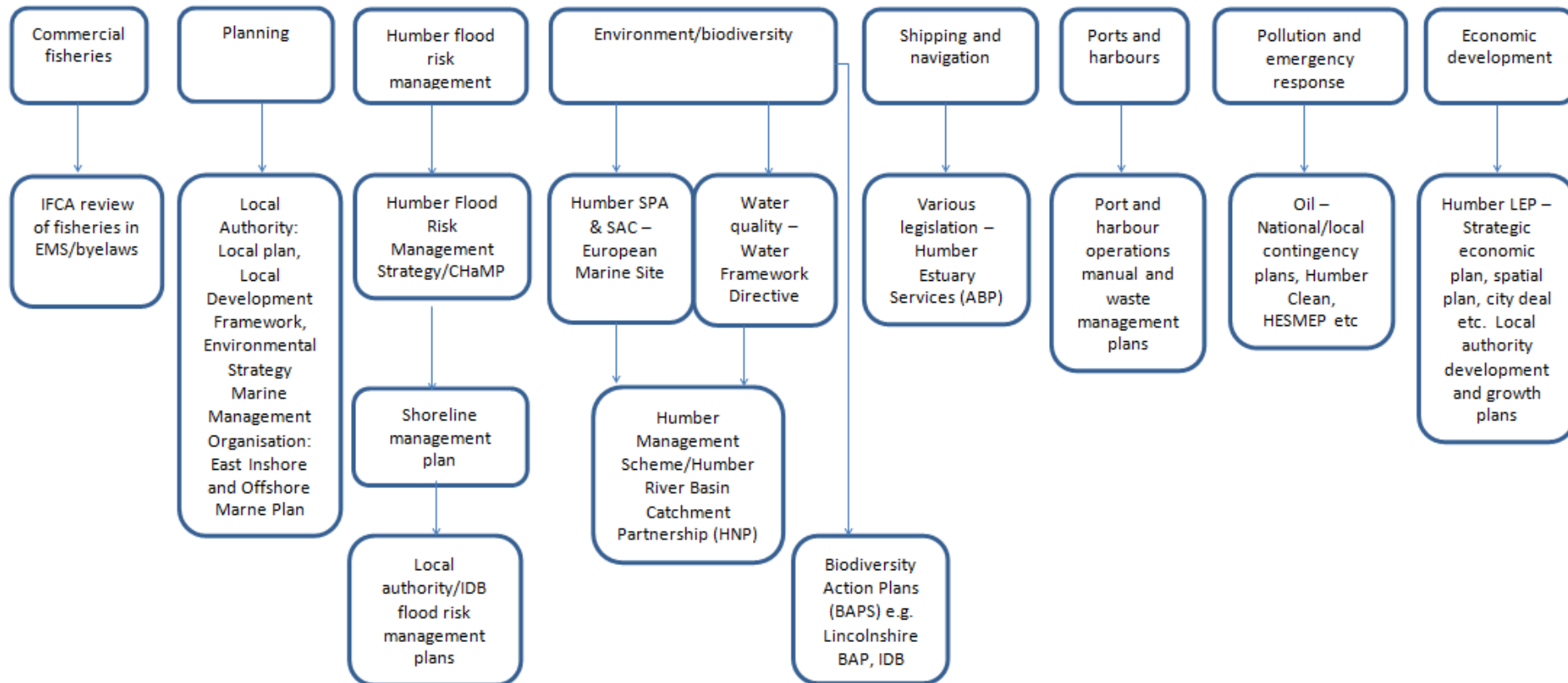
# Managing the Humber EMS



- Statutory activity management
- Focused action plan
- Plans and projects including development by individual authorities



# Management of the Humber – plans and activities





# Statutory management



## Humber Management Scheme FAQs - Commercial and recreational fishing



Industry and nature in harmony in one of Europe's great estuaries

### Key organisations and involvement in EMS management

Fisheries activities within European Marine Sites (EMSs) are managed and enforced by Inshore Fisheries and Conservation Authorities (IFCAs) and licensed by the Marine Management Organisation. The IFCAs remit is to lead, champion and manage a sustainable marine environment and inshore fisheries, by successfully securing the right balance between social, environmental and economic benefits to ensure healthy seas, sustainable fisheries and viable industry. IFCAs were created under the Marine and Coastal Access Act (2009) and their duties are set out from section 149 of the [Marine and Coastal Access Act](#). In relation to the management of activities in the Humber EMS, IFCAs have the powers to create permanent and emergency byelaws for fisheries management or environmental purposes.

There are 2 IFCAs responsible for the management of fisheries within the Humber EMS:

- North Eastern Inshore Fisheries and Conservation Authority district stretches from the River Tyne in the North to a point drawn True East from Haise Sand Fort in the Humber, extending six nautical miles from the coastline out to sea. It covers the Humber Estuary itself, landward to tidal limits.
- Eastern Inshore Fisheries and Conservation Authority district stretches from Haise Sand Fort in the north to Felixstowe in the south, extending six nautical miles from the coastline.

North Eastern IFCA is the lead IFCA involved in the HNP and has representation on the EMS Management Group.

The Environment Agency also has some responsibility for fishing activity within the Humber EMS in relation to migratory species.

### Overview of activity

North Eastern IFCA area	Eastern IFCA area
Trawling	Trawling (very low level; quantification of activity ongoing)
Bait collection	Bait collection (quantification of activity ongoing)
Potting	Intertidal hand collection of shellfish (negligible to low level)
	Potting (very low level; quantification of activity ongoing) <sup>1</sup>

<sup>1</sup> Information to be updated as part of the Article 6 work.

### Threats, current management and gaps in management

Threat	Current Management	Gaps in management
Bycatch of lamprey: trawling (NE IFCA area low intensity - 1	IFCA's are currently undertaking a review of the impact of fishing activities on EMSs as part of Article 6 of the Habitat Regulations 2010. Where activities are viewed to cause an impact, management will be put	

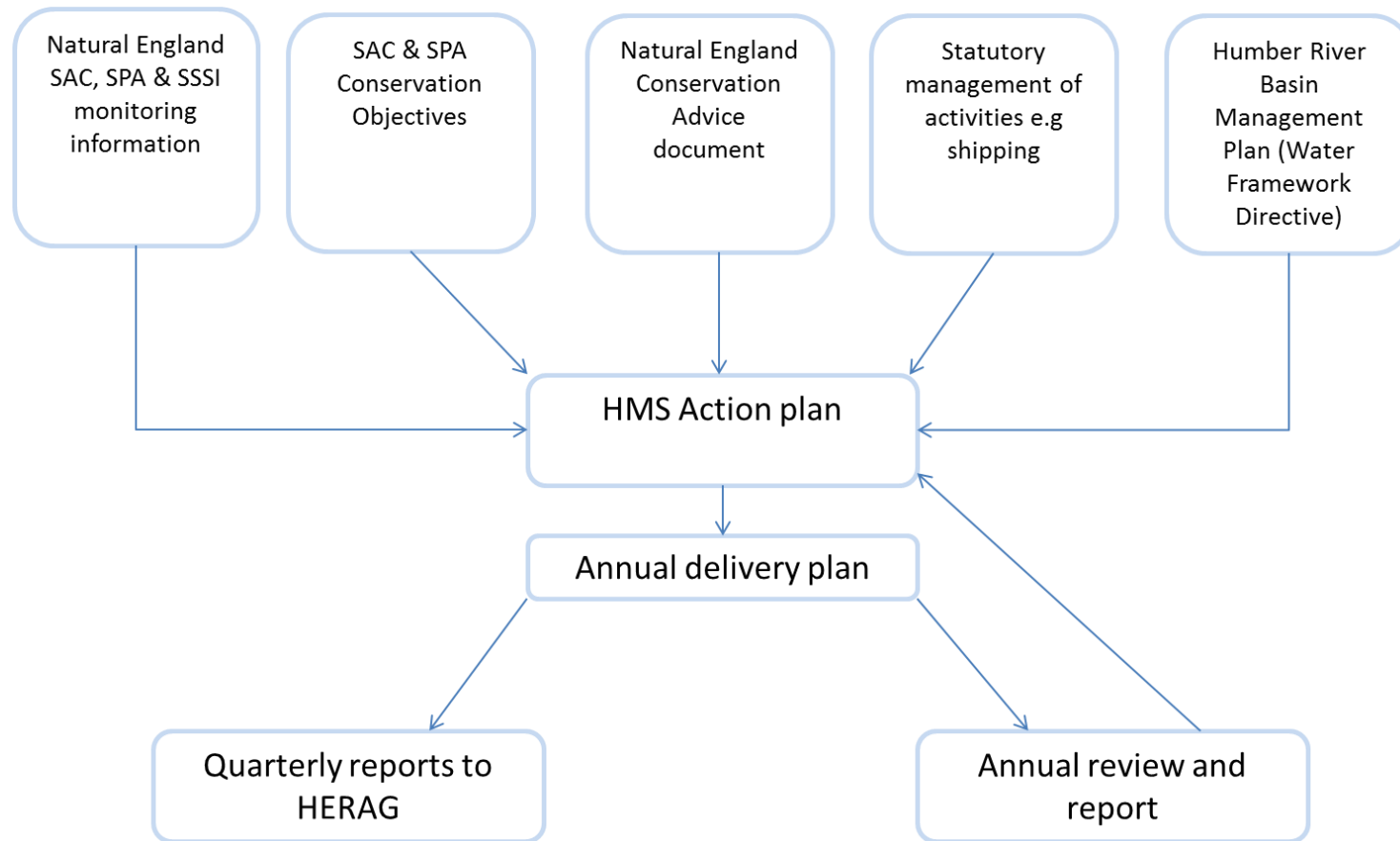
vessel)	in place. This process will be complete by the end of 2016. For more information see <a href="http://www.marinemangement.org.uk/protecting/conservation/ems_fisheries.htm">http://www.marinemangement.org.uk/protecting/conservation/ems_fisheries.htm</a>
Abrasion of subtidal habitats from demersal trawling (as above)	Once the assessments have been completed, this document will be updated to outline any new or additional management.
Disturbance to birds: bait digging	A number of byelaws in relation to fishing activities are in place for the Humber Estuary and can be viewed here: <a href="http://www.ne-ifca.gov.uk/legislation-and-byelaws/byelaw-regulations/">http://www.ne-ifca.gov.uk/legislation-and-byelaws/byelaw-regulations/</a>
Removal of prey species: bait digging	Specifically - Byelaw XXIX: Humber Estuary Fishing Byelaw <a href="http://www.eastern-ifca.gov.uk/index.php?option=com_content&amp;view=category&amp;layout=blog&amp;id=23&amp;Itemid=49">http://www.eastern-ifca.gov.uk/index.php?option=com_content&amp;view=category&amp;layout=blog&amp;id=23&amp;Itemid=49</a>
Abrasion of intertidal habitats from demersal towed gear, intertidal handworking and bait collection	Protected Areas Bylaw, Regulatory Notice 4 (prohibition of fishing activities over eelgrass bed at Horse Shoe Point) is now in place and will be reviewed by April 2016. <a href="http://www.eastern-ifca.gov.uk/index.php?option=com_content&amp;view=article&amp;id=137&amp;Itemid=202">http://www.eastern-ifca.gov.uk/index.php?option=com_content&amp;view=article&amp;id=137&amp;Itemid=202</a>
Data gaps	The IFCA's are reviewing evidence to inform the assessment of the impact of fishing activities on site features. The evidence gaps identified will inform research actions.

### Monitoring

North Eastern IFCA	Eastern IFCA
Annual eel grass monitoring	Annual eel grass monitoring
Cockle stock assessments	Cockle stock assessments

Potential gaps: monitoring of activities - especially bait digging

# Humber Management Scheme: Management Plan



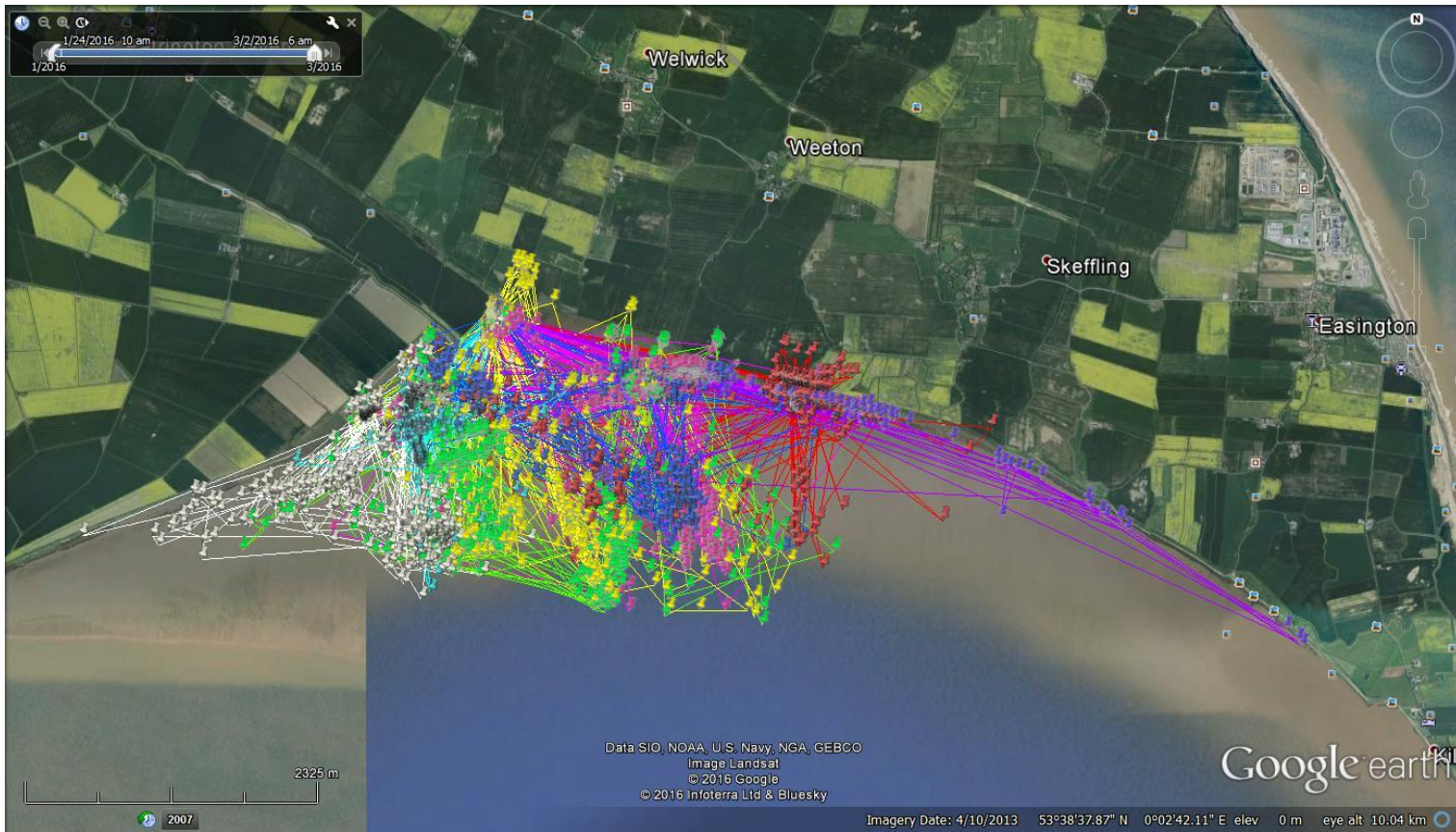
# HMS action plan



1. Policy and legislation
2. Site safeguard and management
3. Research and monitoring
4. Advisory
5. Communications and publicity



# Bird tracking



Industry and nature in harmony in one of Europe's great estuaries

# In-combination database



A screenshot of a web browser displaying the "In-Combination Database" search interface. The browser's address bar shows "staging.humburnature.co.uk/consultant". The page has a dark teal header with "In-Combination Database" on the left and "Welcome back, Tania Davey" on the right. Below the header is a green navigation bar with "Database &gt; Search" on the left and "Search | Reports | Admin | Account | Log Out" on the right. The main content area is titled "Search Database" and includes a brief instruction: "To search the database select an impact. You may refine your results by selecting interest features or by entering key words into the text field." There are two main sections: "Interest Feature(s)" and "Search Database". The "Interest Feature(s)" section is divided into "Habitats (SAC, SPA, Ramsar)" and "Birds (SPA, Ramsar, Annex 1)". The "Habitats" section contains a list of 13 items, each with an unchecked checkbox. The "Birds" section is currently empty. The "Search Database" section contains a dropdown menu for "Impact" with the text "Please select an option...", a text input field for "Key words", a small italicized note "Enter any additional search terms to narrow your search results", and a green "Search Database" button.

# Recreation management



Report

footprint  
ECOLOGY

Desk Based Study on  
Recreational Disturbance

Final Report

footprint  
ECOLOGY

Results of the recreational  
visitor surveys across the  
Humber Estuary

Report

footprint  
ECOLOGY

Humber Winter Bird  
Disturbance Study

HELPING YOU  
AND YOUR  
DOG...

...enjoy the Humber Estuary  
whilst protecting this special  
area and its wildlife

**Humber  
Hounds**

humberhounds@humbernature.co.uk

Forest Office  
Cold Harbour  
Worham  
Dorset BH20 2PA

Forest Office  
Cold Harbour  
Worham  
Dorset BH20 2PA  
Tel/Fax: 01202 512444  
info@humberecology.co.uk

Kathryn Ross & Durwyn Liley

connecting wildlife and people  
www.footprint-ecology.co.uk

Forest Office  
Cold Harbour  
Worham  
Dorset BH20 2PA  
Tel/Fax: 01202 512444  
info@humberecology.co.uk

Industry and nature in harmony in one of Europe's great estuaries



# Awareness raising: Humber Estuary app & Estuary TV



A screenshot of a mobile YouTube video player. The video title is 'OUR ESTUARY EPISODE ONE THE HUMBER'. The video player shows a blue sky with clouds. The video progress is at 0:16 / 24:00. The video is muted. The channel name is 'Estuary TV' with 505 subscribers. The video has 187 views. The background of the slide shows a landscape with a beach and water.

Industry and nature in harmony in one of Europe's great estuaries

# Integration and partnership working



- HMS is part of the Humber Nature Partnership
- Government Natural Environment White Paper 2011
- Integration of HMS and Humber Industry Nature Conservation Association (INCA)
- Strengthened partnership and working towards better integration

# Strengths and challenges



1. Many different plans, policies, legislation – difficult to integrate
2. Funding – work on a small budget
3. Very strong and established partnership



# Further information



Darren Clarke, Manager, Humber  
Nature Partnership

[Info@humbernature.co.uk](mailto:Info@humbernature.co.uk)

Tel: (+44) 01652 631525

[www.humbernature.co.uk](http://www.humbernature.co.uk)