



THE FOUNDATION: ADVANCING PROJECTS FOR THE ELBE HABITAT

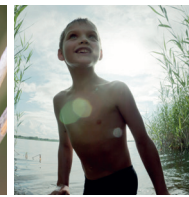
The Elbe Habitat Foundation was established in 2010 by the Free and Hanseatic City of Hamburg in a bid to enhance the ecological status of the Tidal Elbe.

The Foundation:

- Makes the banks and dyke foreland of the Tidal Elbe more natural, providing a home for many plants and animals
- Supports the development of essential shallow water areas
- Improves tributaries
- Preserves and develops the ecological value of biologically productive tidal flats
- Encourages the development of natural dynamics

In order to achieve these goals, the Elbe Habitat Foundation:

- Implements its own actions
- Promotes external projects
- Is able to acquire real estate
- Is able to plan or implement measures on behalf of third parties
- Engages in educational work, information activities and public relations work



CONTACT

Stiftung Lebensraum Elbe
(Elbe Habitat Foundation)
Dr. Elisabeth Klocke
Neuenfelder Straße 19
21109 Hamburg
Germany
Phone: + 49 40 42840 8344
info@stiftunglebensraumelbe.de

www.stiftunglebensraumelbe.de

Photo credits: BUE, HPA, Thomas Hinsche, iStock/Vizerskaya, T. Kleber-Janke, B.-U. Netz, N. Ruhl, H.-J. Schaffhäuser, C.C. Schmidt

Last amended: January 2016

For a dynamic riverscape

THE TIDAL ELBE HABITAT: PRESERVING AND ENHANCING NATURAL DIVERSITY

OUR TOPICS

We make the banks and dyke foreland more natural, providing a home for many plants and animals.

We improve tributaries or reconnect them to the Elbe.

We preserve and develop the ecological value of species-rich and biologically productive tidal flats.

We support the development of essential shallow water areas.

We encourage the development of natural dynamics.

● Projects

The Elbe Habitat Foundation coordinates 15 further projects across three federal states that are either under preparation, in progress or have already been completed.

Last amended: December 2021

